



LEVEL SWITCHES — ROTARY VANE

WEATHERPROOF
FLAMEPROOF
INDOOR

- RELIABLE SYNCHORNOUS MOTOR ● SMOOTH CONTINUOUS ROTATION ●
- IDEAL FOR BULK MATERIALS AND SOLIDS ●



MODEL 5701 LEVEL SWITCH

SWITZER ROTARY VANE Level Switches are one more addition to the vast range of Level Switches and is best suited for bulk materials. Rotating Vane driven by a most reliable synchronous motor ensures a very smooth continuous rotation until it is stopped by an approaching level of solids to the desired

value. When the level of the solid raises and obstructs the vane, rotation of vane stops and a change-over occurs in the instrument quality snap-acting microswitch. The motor also stops rotation and starts again when the level recedes and vane is free to rotate.

GENERAL SPECIFICATIONS

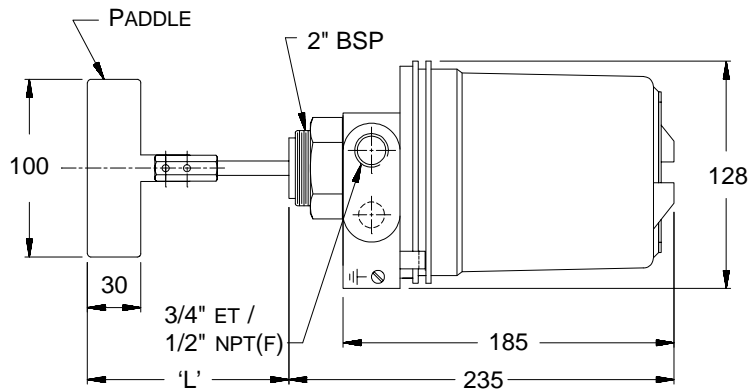
| | | | |
|------------------------------|---|----------------------------|--|
| Enclosure | Style GK, Die Cast Aluminium, Weatherproof to IP:65 optionally Flameproof to Gr.IIA, IIB or IIC to IS:2148. | Switching | Snapacting SPCO microswitch 15A 230V AC; |
| Vane and Wetted Parts | 304 SS Standard 316 SS Optional | Rotary Speed | 1 RPM |
| Connection (Mounting) | Screwed 1" BSP(M) or Flanged 2½" ANSI 150 FF | Torque | 0.5 to 1.0 Kg Cm |
| Power Supply | 230V AC 50 Hz | Process Temperature | Max. 60°C (inside Tank) |
| | | Electrical Entry | ¾" ET Std; ½" NPT optional |
| | | Weight | 3.6 Kg (Screwed type) 3.8 Kg (Flanged type) |

ORDERING SPECIFICATIONS

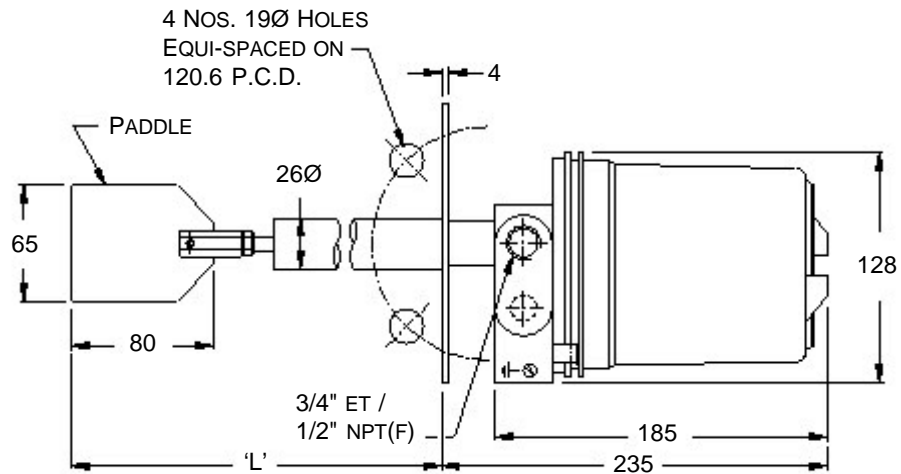
| | | | | |
|---|-------------|----------|----------|------------|
| STYLE – Rotary Vane Level Switch | 5701 | 1 | S | □□□ |
| VANE AND WETTED PARTS | | | | |
| 304 SS (Standard) | | 1 | | |
| 316 SS (optional) | | 2 | | |
| MOUNTING | | | | |
| Screwed | | | S | |
| Flanged (Refer Drawing below) | | | F | |
| IMMERSION LENGTH ('L' mm) | | | | |
| Standard | | | | 250 |
| Non-standard (Consult Factory) | | | | □□□ |

MOUNTING DIMENSIONS

SCREWED TYPE



FLANGED TYPE



NOTE : The Mating Flange should be ANSI 2" # 150 FF with bore opening of 67.0 mm

ALL DIMENSIONS IN mm

Prior notification of changes in specification is impracticable due to continuous development.

FOR **SWITZER'S** OFFICES IN INDIA

CHECK AT:

<http://www.switzerinstrument.com/offices.htm>